

FROMENTAL

Molten Folly  
Chinoiserie





A simple but effective chinoiserie, our Molten Folly design is a reprisal of our cloisonné technique applied to our silk ground. Rendered onto a metallic brushed ground, our classic Chinoiserie pattern is rich and illustrative, an ode to the ancient metalwork technique.

FRONT COVER IMAGE Molten Folly in Argyros  
RIGHT-HAND IMAGE Molten Folly in Argyros  
Credit: Valerio Geraci





Fine decorative lines are hand-painted and gilded onto our hand-brushed strata silk.



IMAGE Close up of Molten Folly in Kupros

# Molten Folly C072

Fromental wallcoverings are hand-made to order, tailored for each room. From supplied elevations and floor plan, we will place the design and panel seaming to ensure optimal installation.

## Technical Information

**Material and Technique**  
Hand-foiled onto Silk

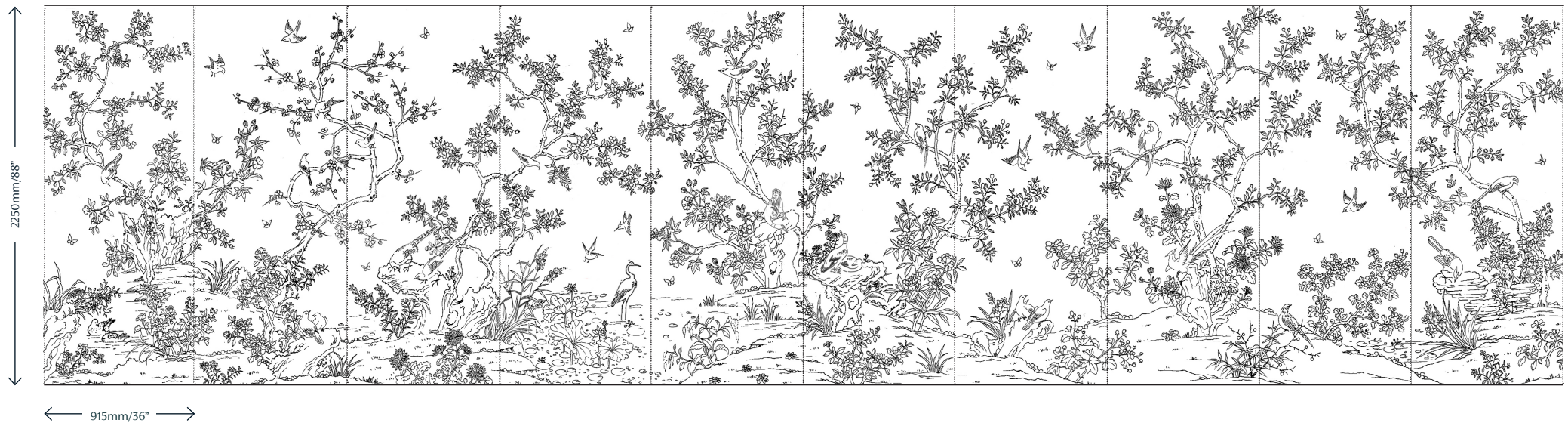
## Design

This design is shown here in our 'Folly' layout, it is also available in all of our Chinoiserie designs.

## Dimensions

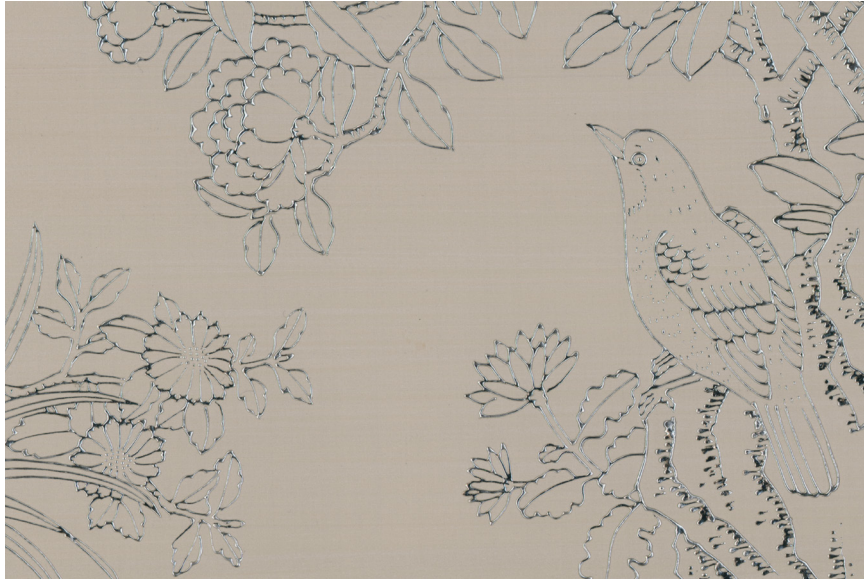
**Height** - Panels are supplied 300mm/12" higher than specified wall height. Standard panel height is up to 4300mm/14ft. Taller panels are available with a surcharge.

**Width** - Standard panel width 915mm/36" plus 15mm/ 1/2" trim.





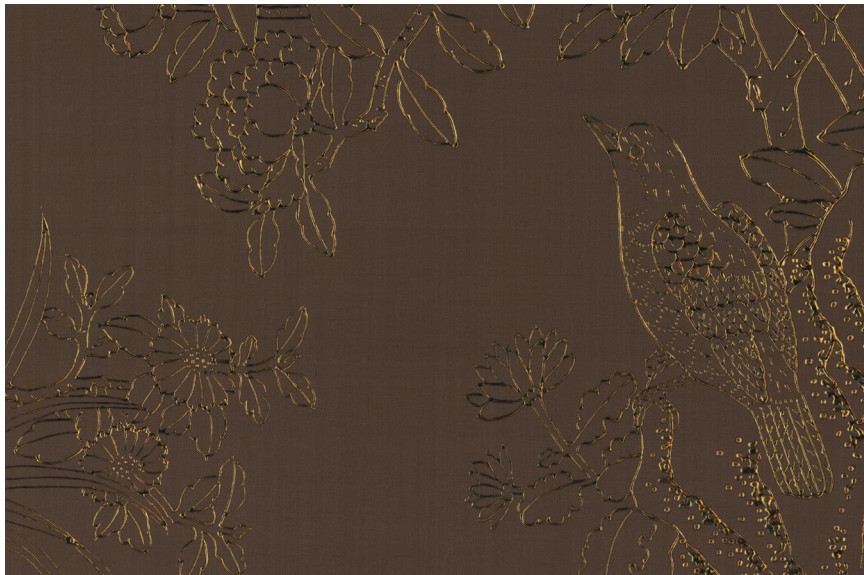
# Colourways



01 **Argyros** on Strontium Strata Silk



02 **Platina** on Flint Silk



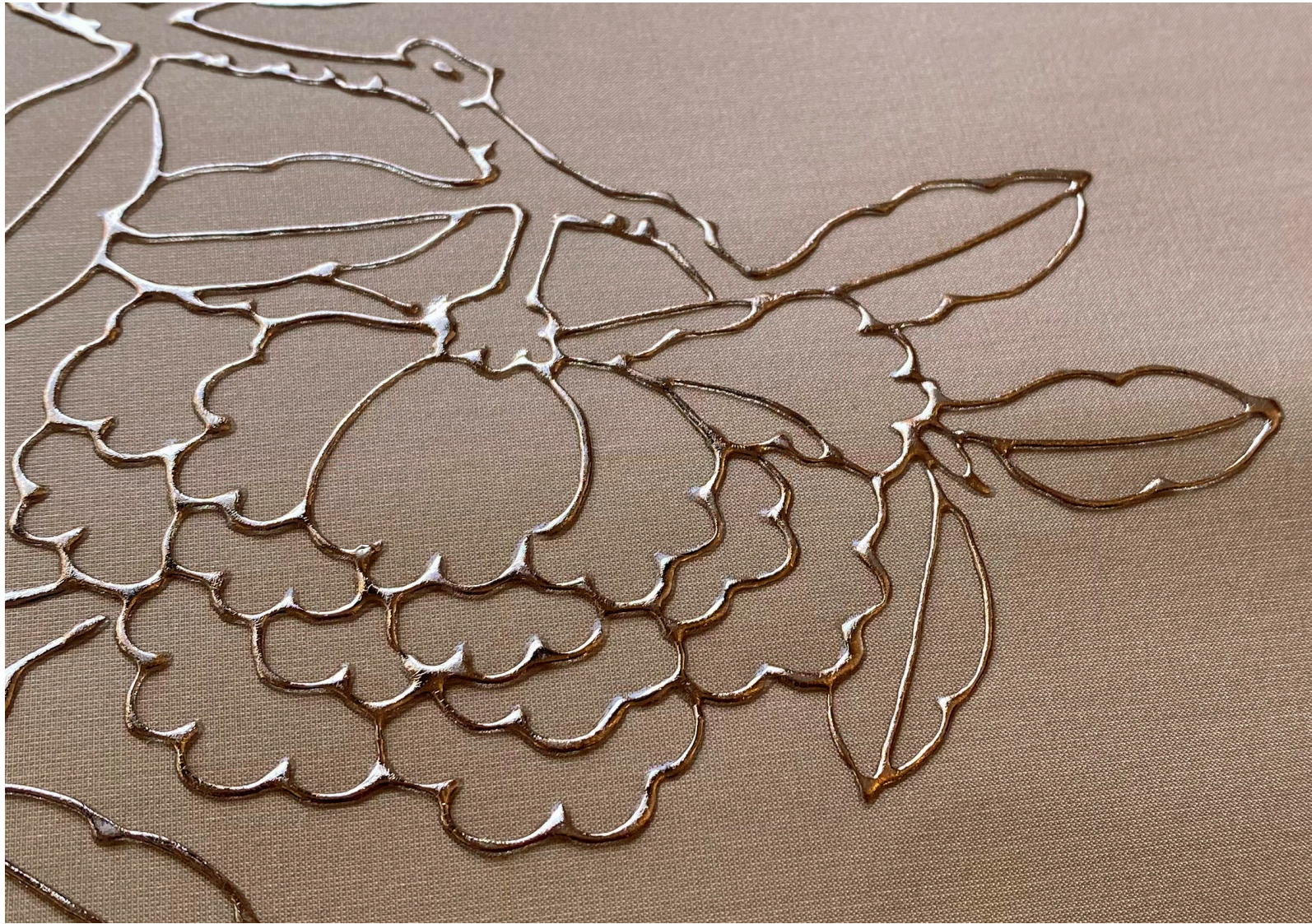
03 **Kupros** on Bourbon Silk



04 **Grafitis** on Graphite Silk



FROM MENTAL



Molten Folly in Platina