

FROMENTAL

Travertine  
Roomskins



The stunning aesthetic of Travertine is both understated and mesmerising. This brushed and layered effect is created using washes of iridescent metallic paints on silk, resulting in a shimmering texture reminiscent of travertine stone.

**FRONT COVER IMAGE** Travertine in Atlas on Silk  
Credit: Chris Everard and Alyce Taylor  
**RIGHT-HAND IMAGE** Travertine in Charon on Silk  
Credit: Isabella Depla / Drummonds





**ABOVE IMAGE** Travertine in Rhea on Silk  
Credit: Lichten Craig Architecture & Interiors



A variety of loose and gestural painting techniques are beautifully combined to create this effortless and exquisite design.

**RIGHT-HAND IMAGE** Close-up of Travertine in Mimas on Silk

# Travertine D006

## Grain Direction

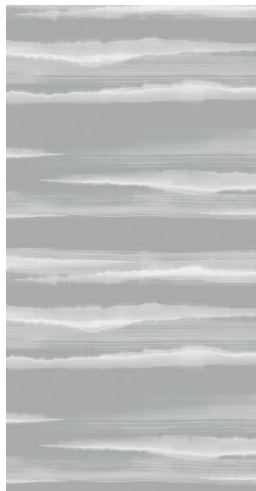
Travertine can be supplied with two different grain directions: 'Parallel Grain' and 'Perpendicular Grain'.

**Parallel Grain** - the brushstrokes are in line with the grain of the panel; with this technique the panel seams almost completely disappear.

**Perpendicular Grain** - the brushstrokes run across the width of the panel, perpendicular to the grain; with this technique the strong panelling becomes a feature of the design.

Parallel Grain

Perpendicular Grain



← 915mm/36" →

← 915mm/36" →

## Design and Installation

Panels can be painted either 'Parallel' or 'Perpendicular' as detailed above, these can then be installed horizontally or vertically creating 4 distinctive effects.

The most popular installation is Parallel Grain, hung horizontally, as illustrated in the example on the right. It is important to note that with this installation the design will not match at end-to-end panel joins. To minimise this, panel joins are placed in wall corners where possible.

We can provide a panel plan without a design layout to show where panel joins will be placed; this will carry a 10% tailoring fee. We recommend this tailored option for optimum results.

## Measuring Process and Quantity

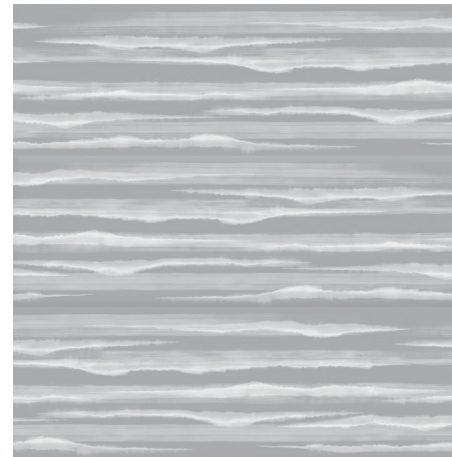
Quantity will be calculated from the total square meterage/yardage including our standard panel tolerance.

For a panel plan to be created either elevations/floor plan should be provided or accurate dimensions need to be specified.

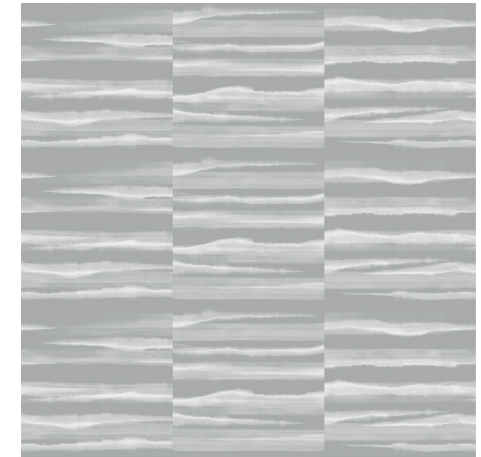
**Panel Length/Height** - Standard panel length up to 3600mm/141". Panels over the standard length are available but may carry a surcharge.

**Panel Width** - Standard panel width 915mm/36" plus 15mm/1/2" trim.

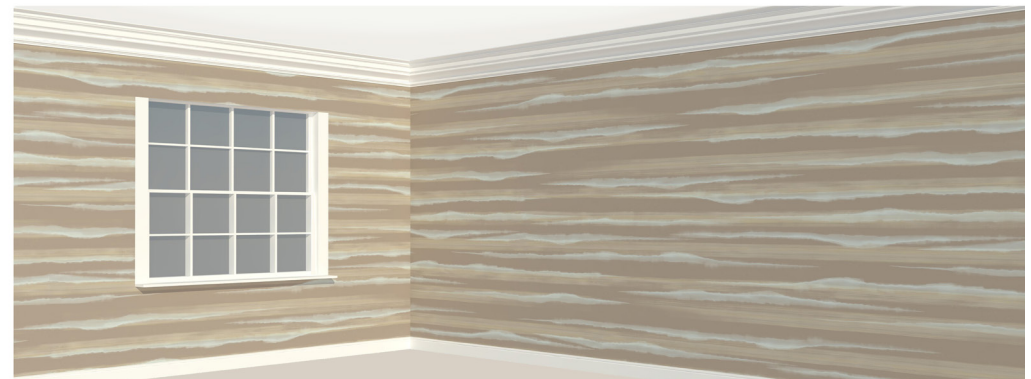
Parallel Grain, hung horizontally



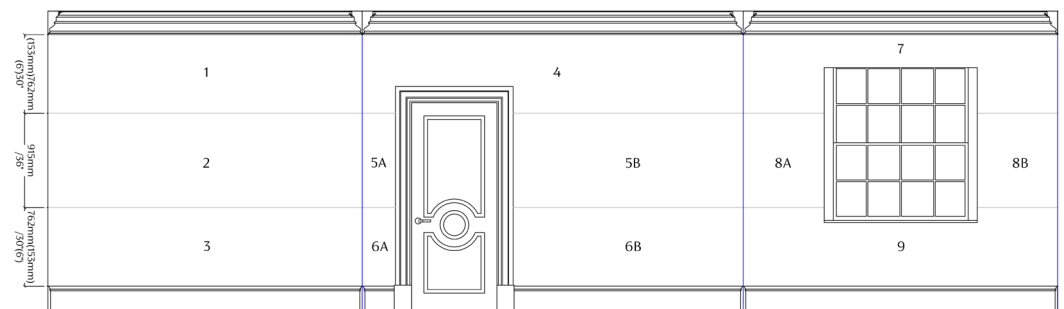
Perpendicular Grain, hung vertically



Example Corner Join (Parallel Grain, hung horizontally)



Example Panel Plan





Travertine in Titan on Silk

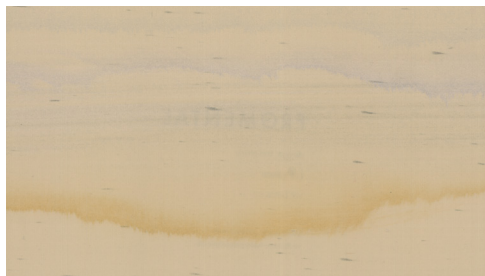


Travertine in Vega on Silk

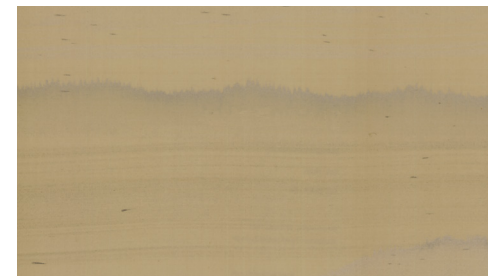
# Colourways



01 **Epsilon** on White Silk



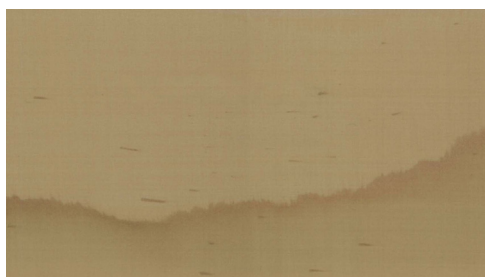
02 **Calisto** on Putty Silk



04 **Rhea** on Bone Silk



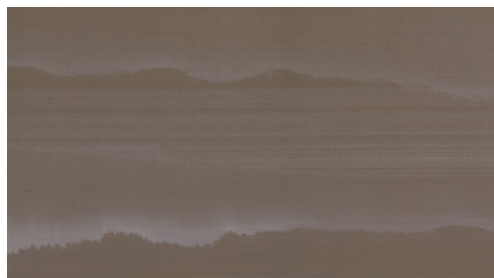
05 **Saturn** on Manila Silk



06 **Vega** on Kalahari Silk



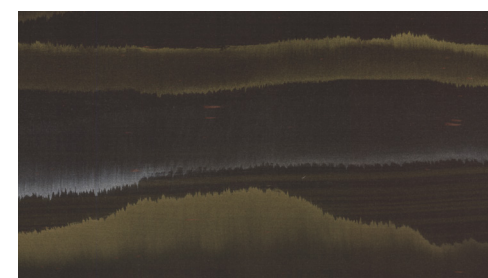
08 **Titan** on Caramel Silk



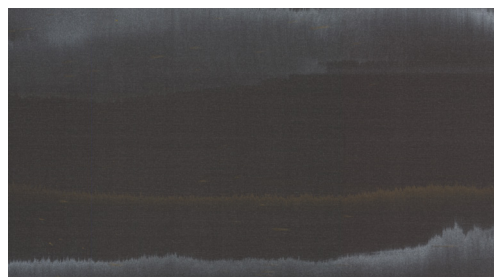
09 **Luna** on Flint Silk



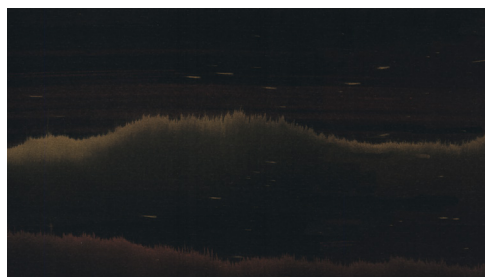
10 **Mimas** on Slate Silk



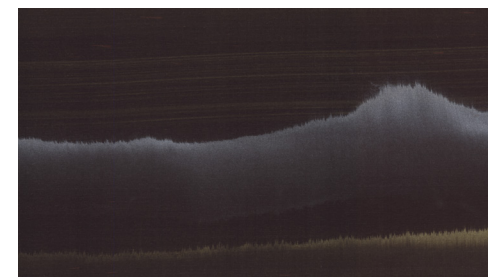
13 **Andromeda** on Mahogany Silk



14 **Pluto** on Graphite Silk

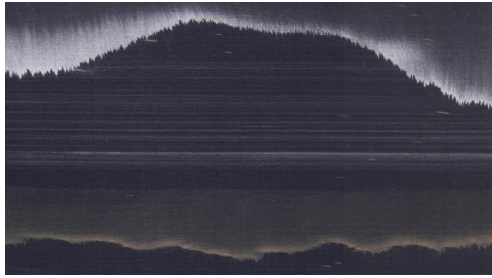


15 **Iapetus** on Black Silk

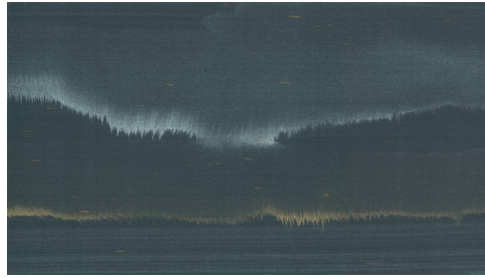


16 **Ixion** on Mulberry Silk

# FROMENTAL



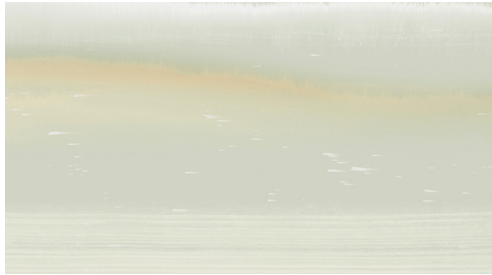
17 **Orcus** on Indigo Silk



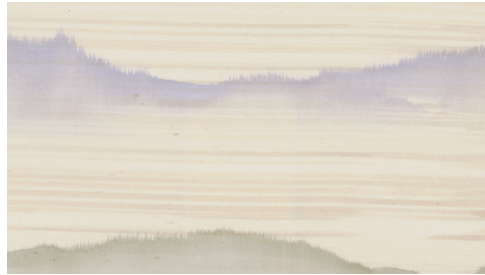
22 **Neptune** on Stellar Silk



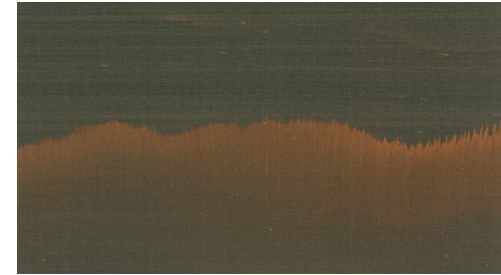
23 **Tethys** on White Silk



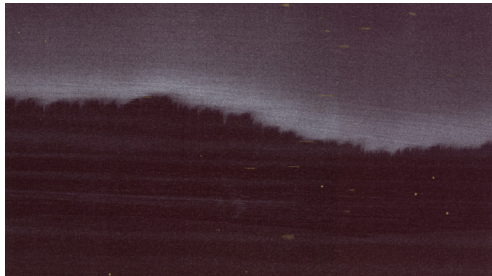
24 **Halley** on Cardigan Silk



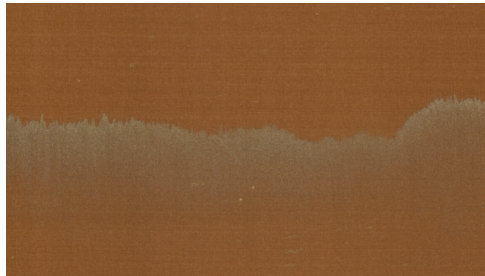
25 **Miranda** on White Silk



26 **Atlas** on Forest green Silk



27 **Charon** on Beet Silk



28 **Kepler** on Rust Silk