

FROMENTAL

Paling
Roomskins



Traditional Japanese paper making techniques transform reclaimed mulberry in to Papier-mâché, thus creating these intricate webs of paper. The combination of the natural fibrous quality of the Mulberry paper with the soft sheen of our silk creates this textural design.

FRONT COVER IMAGE Paling in White
Credit: Helen Green Design
RIGHT-HAND IMAGE Paling Dark Grey



These beautifully organic sheets of woven paper are overlaid on to our lustrous silk, resulting in an unlikely balance of raw texture and smooth shine.



IMAGE Close-up of woven paper sheets shown on Elephant Silk

Paling D011

Fromental wallcoverings are hand-made to order. Each panel is exclusively created to fit clients' specifications. From supplied elevations and floor plan we will calculate the amount of wallcovering required to ensure optimal installation.

Technical Information

Material and Technique

Appliquéd paper on paper-backed silk.

Design

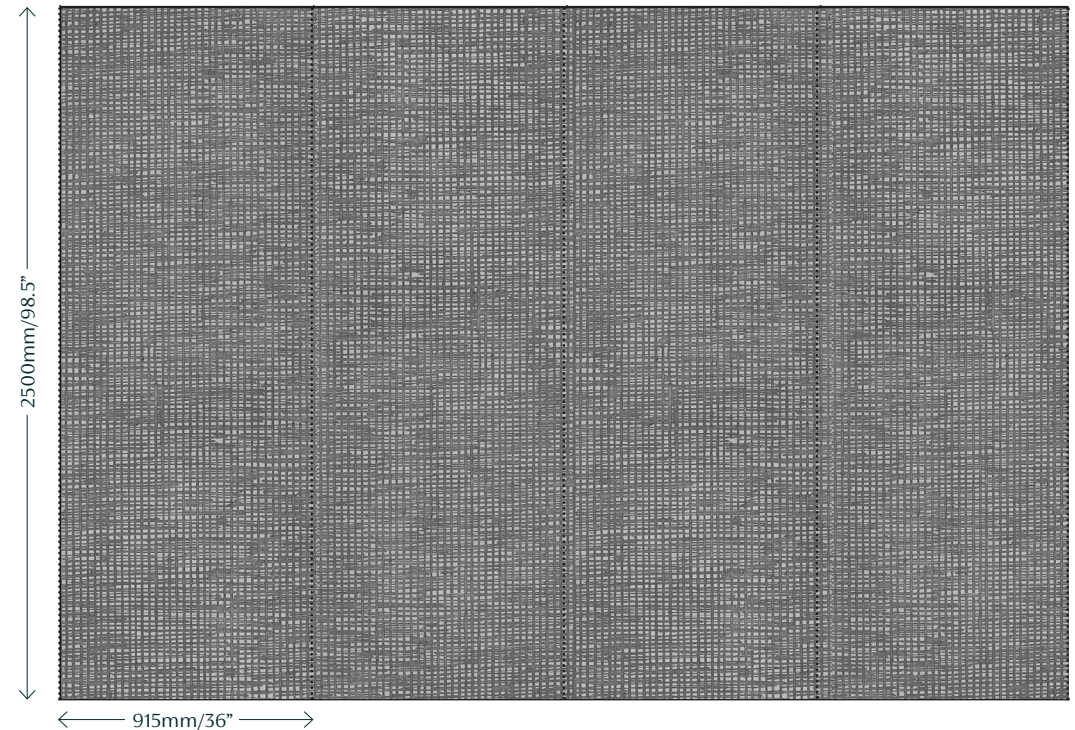
Each panel of this wallcovering is individually made, therefore the design will not join across panel seams. However, joins are usually well hidden within the complex pattern. This is illustrated in the visuals on the right.

Dimensions

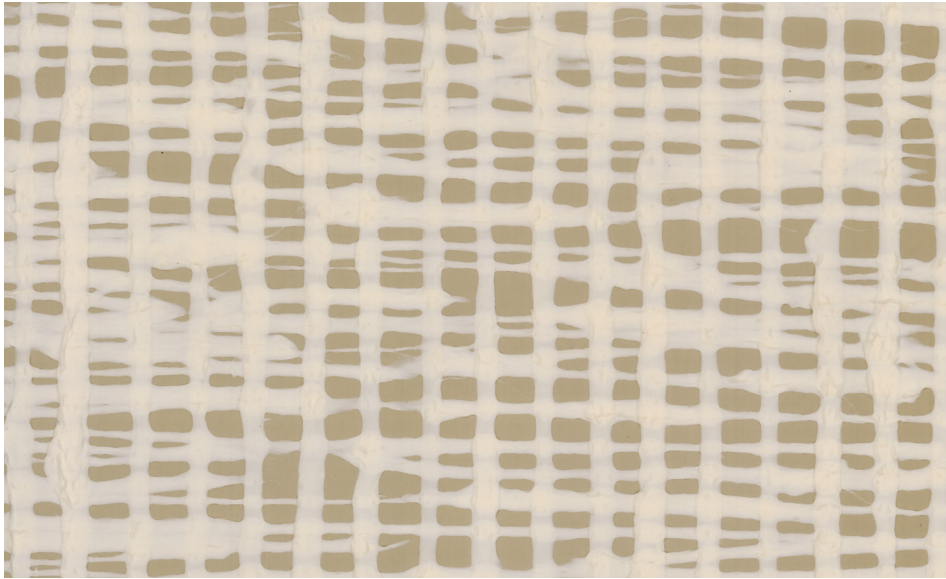
Height - Panels are supplied 150mm/6" higher than specified wall height. Standard panel height is up to 4300mm/14ft. Taller panels are available with a surcharge.

Width - Standard panel width 915mm/36" plus 15mm/1/2" trim.

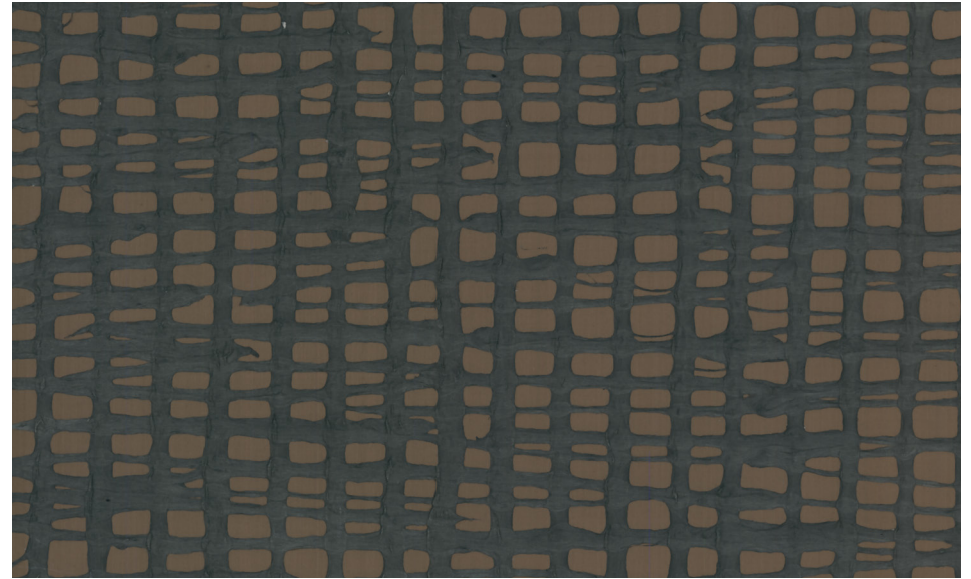
Example Corner Join



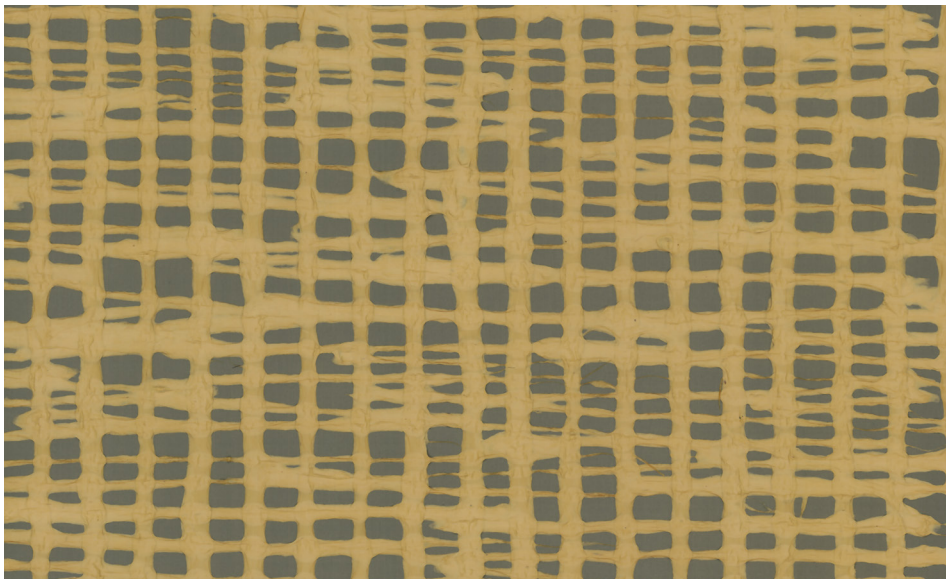
Colourways



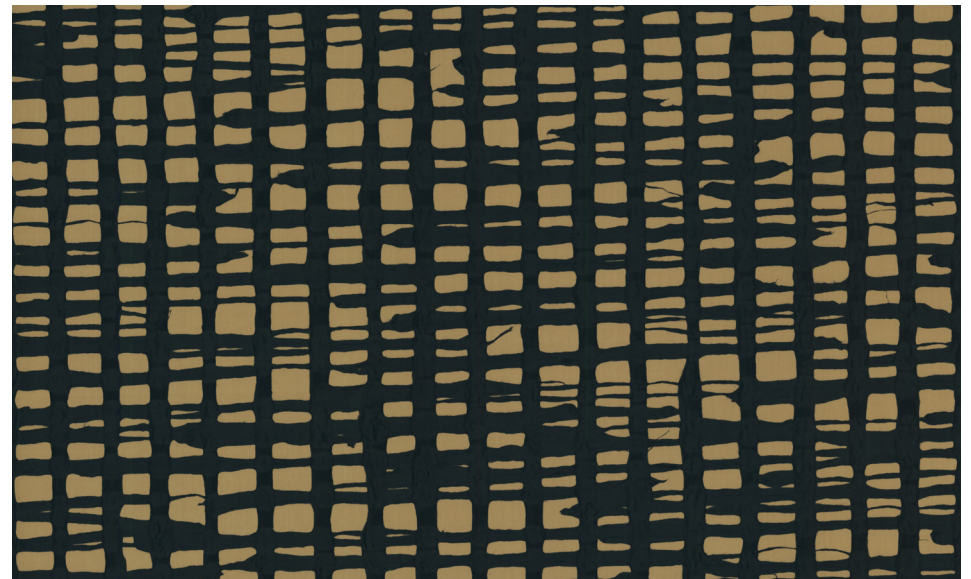
01 **White** on Platinum Silk



04 **Dark Grey** on Flint Silk

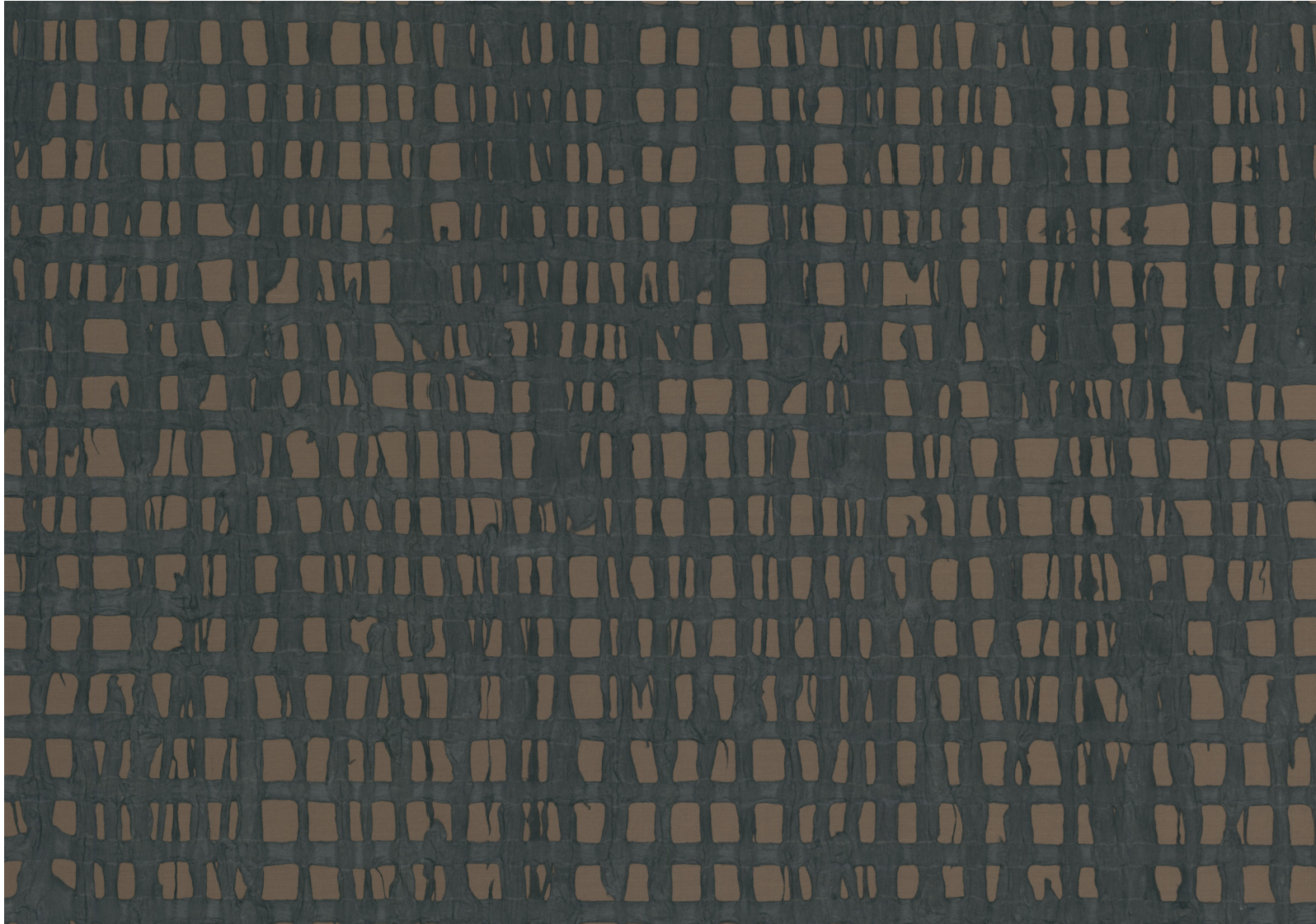


06 **Ochre** on Seagreen Silk



09 **Black** on Kalahari Silk

FROM MENTAL



Paling in Dark Grey