

FROM MENTAL

Bargello Tuck
Roomskins

Flame stitch through the centuries, in its many shapes, scales and colours has been treated in many mediums, from embroidery to needlepoint and has always injected a flamboyant and dynamic visual punch to an interior.

Fromental has reinterpreted this fabric, a joyful renaissance favourite, as a vibrant and modern wallpaper.

FRONT COVER IMAGE Bargello in Flitwick
RIGHT-HAND IMAGE Bargello in Parham



Bargello Tuck Z024

Technical Information

Material and Technique

Hundreds of individual brushstrokes were used to create the pattern; mimicking the stitches of weave and needlepoint. These are rendered in print onto smooth non-woven paper.

Dimensions

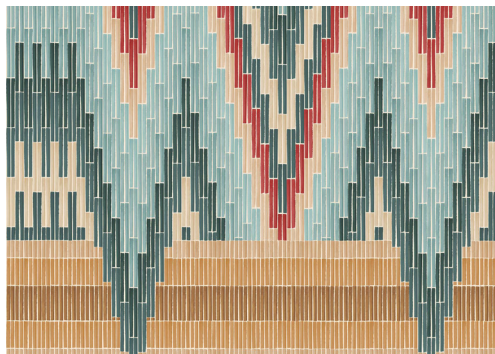
Bargello is supplied in pre-trimmed rolls - 52cm/20.4" wide and 10m long.

Repeat size - 95cm / straight match

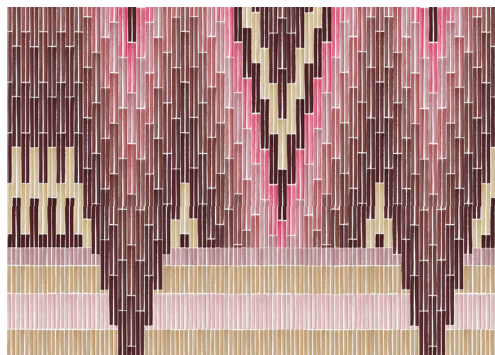


Panel Layout

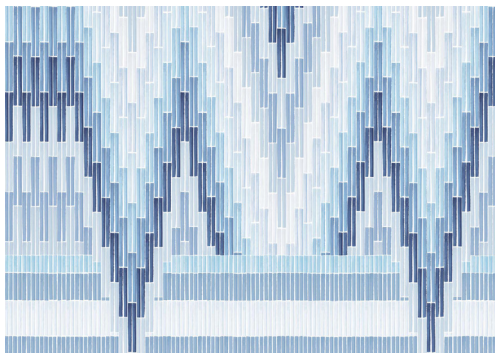
Colourways



01 Parham



03 Westwood



08 Flitwick

