



FROMENTAL

Plain Silks



### P001 Plain Silk

Our Plain Silk is an extremely fine weave 'parachute' which is mounted by hand using a traditional process. This elegant silk makes a beautiful plain wallcovering or the background for our hand-painted or hand-embroidered designs.

These finely treated, paper-backed silks present a sheer smooth surface that is ideal for use either on its own or as a background to any of our hand-painted or embroidered designs.

### P003 Strata Silk

Iridescent pigments are hand-brushed onto silk. The metallic stroke runs horizontally to create a distinct panelled effect. The shimmering smooth surface is ideal for use either on its own or as a background to any of our hand-painted or embroidered designs.

### P004 Dupion

Beautiful and organic, this slub silk is woven using a rougher technique to add texture and depth. The silk slub runs horizontally in the panel, creating a slightly panelled effect.

### P009 Faille

Faille is woven with a spun blend of silk and linen fibres. The linen yarns contrast with the lustre of the silk to achieve rich textural ground. These natural, textural silks bring a richness and warmth to any room, whether in neutral delicate shades or rich and deep hues.

## Technical Information

### Dimensions

Height - Panels are supplied as specified cut lengths. We recommend a minimum of 150mm/6" higher than specified wall height. Standard panel height is up to 4300mm/14ft. Panels over the standard height are available with a surcharge.

Panel width: 915mm / 36"

### Colour

Please note that the colour of silk can vary within the due lot creating a panelled effect. This is a natural aspect of a silk room.

This is a hand-painted product and a variety of brush strokes should be expected. The stree further accentuates the panelled effect within the room..

Please note images are for colour reference only, physical samples are available on request.

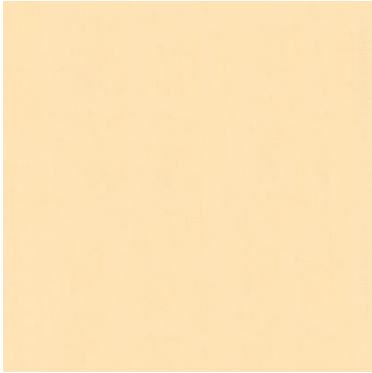
FRONT COVER IMAGE Plain Silk in Taro  
RIGHT-HAND IMAGE Strata Silk in Pyrite



P001 Plain Silk



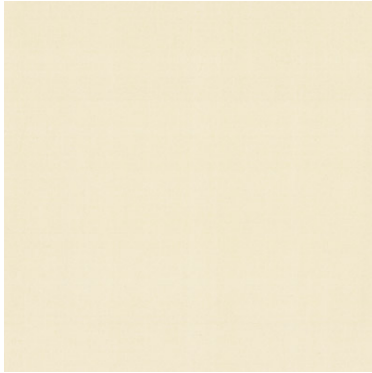
01 White



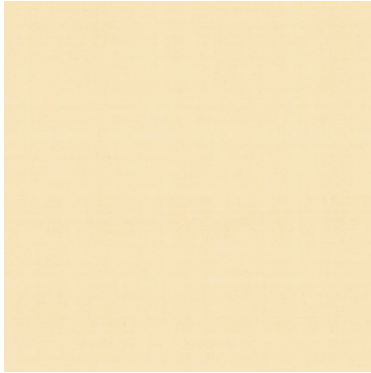
02 Putty



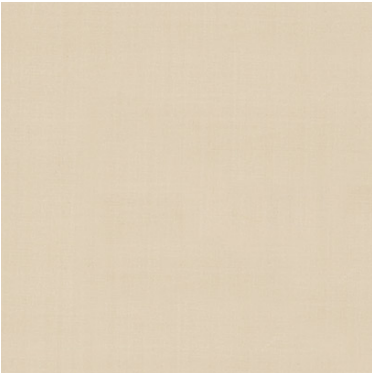
03 Bone



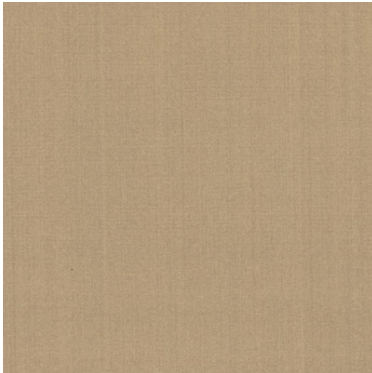
04 Platinum



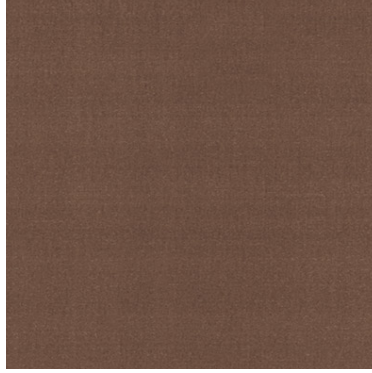
05 Manila



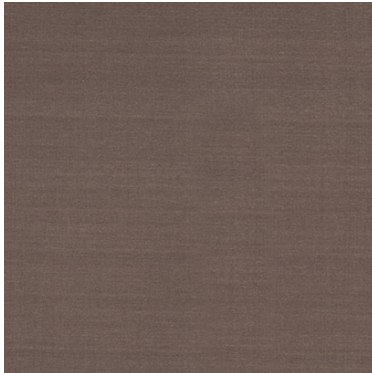
07 Pebble



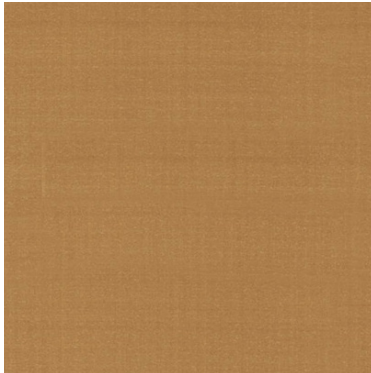
08 Flint



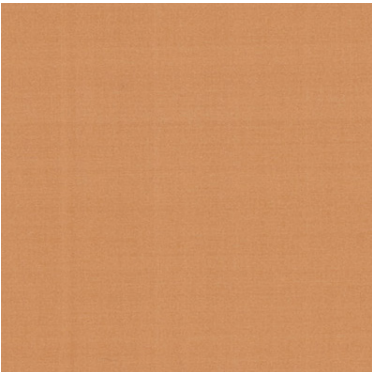
09 Bourbon



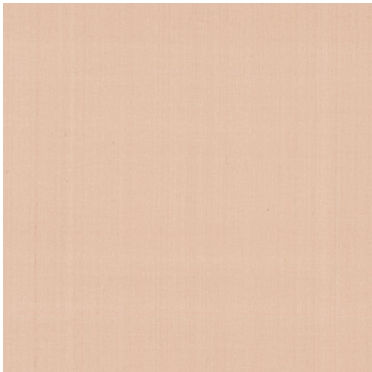
10 Mahogany



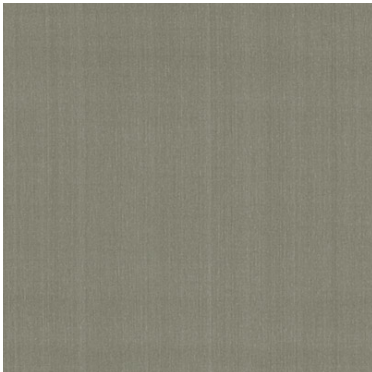
11 Caramel



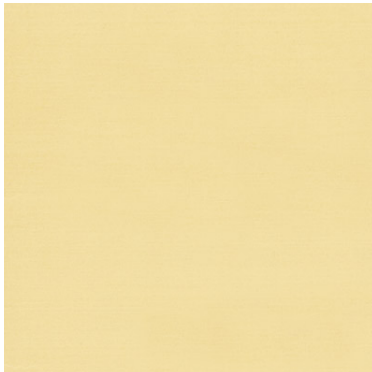
12 Mars



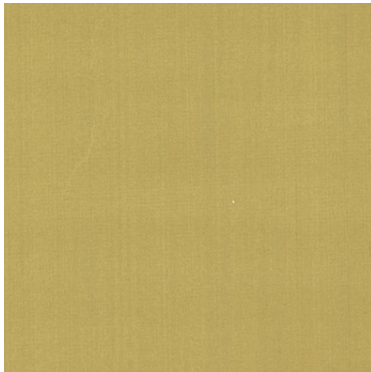
13 Mademoiselle



14 Elephant



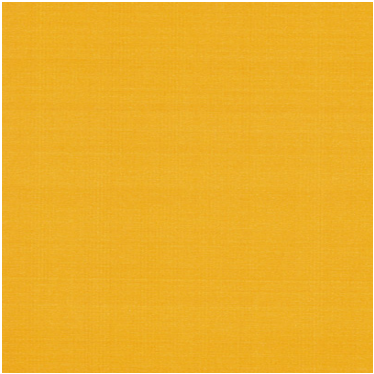
17 Butter



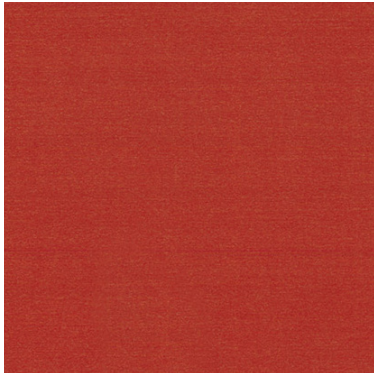
18 Olive



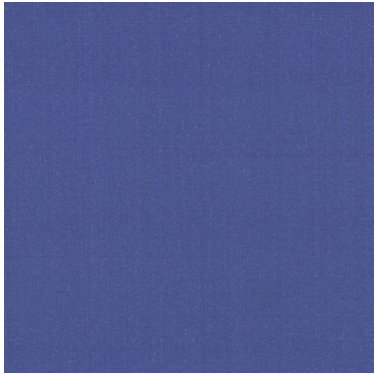
P001 Plain Silk



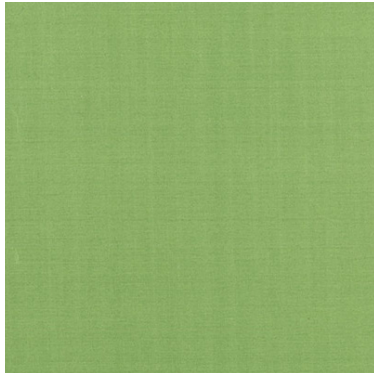
19 Panama



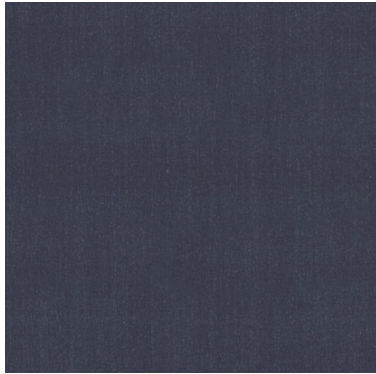
20 Crest Red



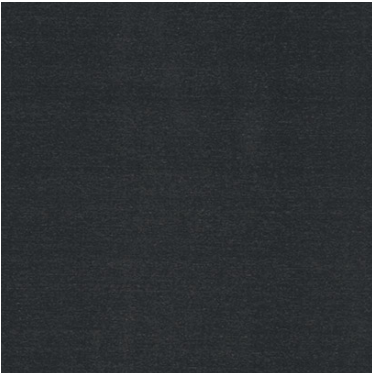
21 Ultramarine



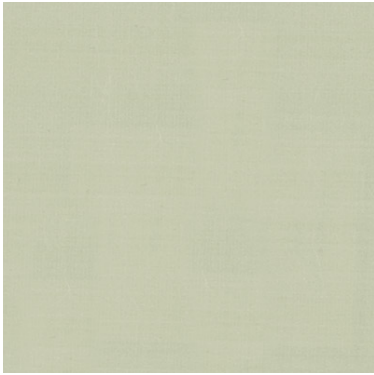
22 Kelly Green



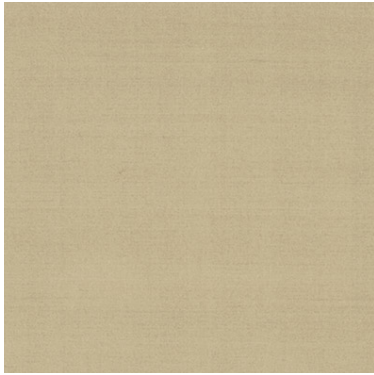
23 Indigo



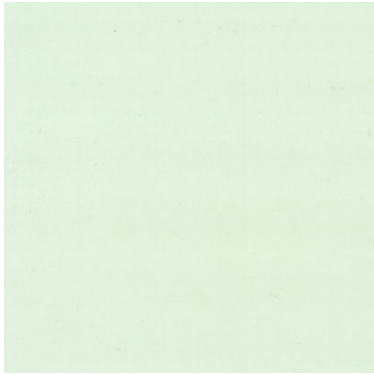
24 Black



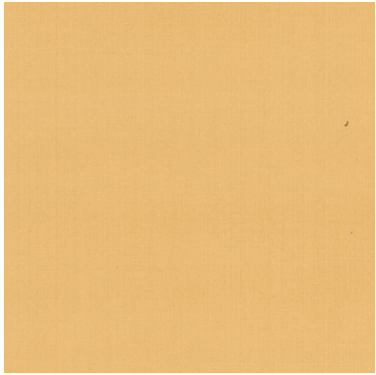
25 Cardigan



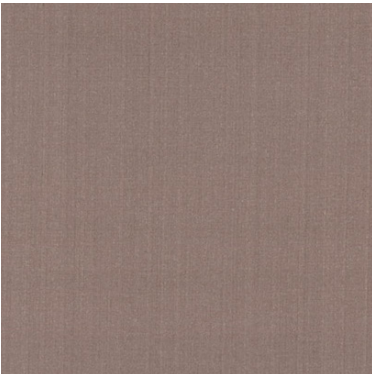
26 Steel



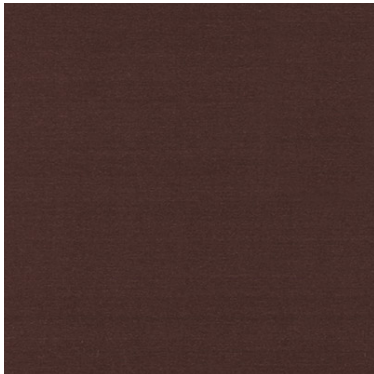
27 Glacier



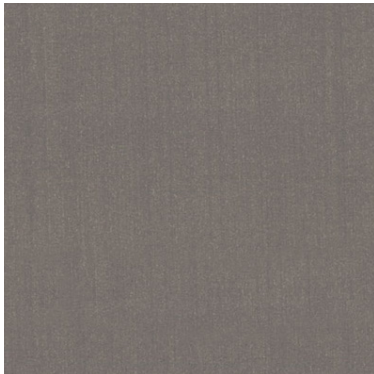
32 Sand



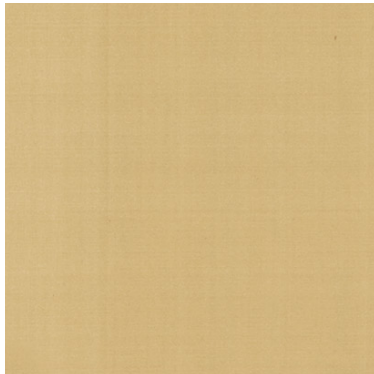
34 Taro



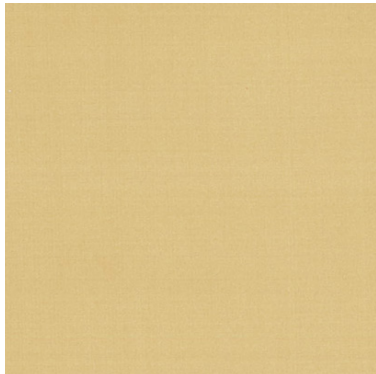
35 Mulberry



36 Graphite

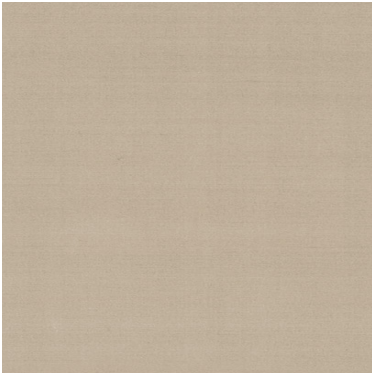


37 Kalahari

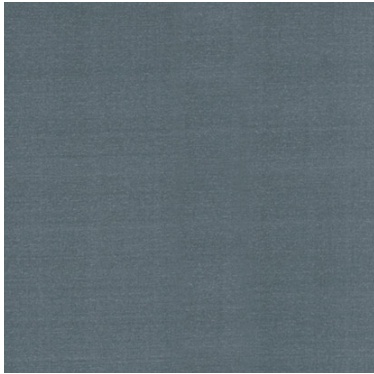


38 Sahara

P001 Plain Silk



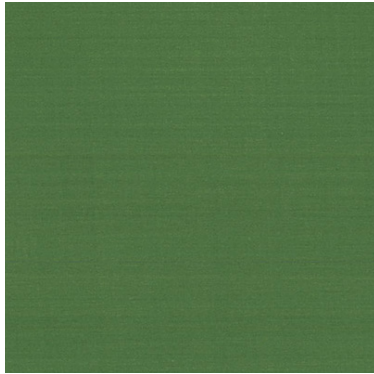
39 Slate



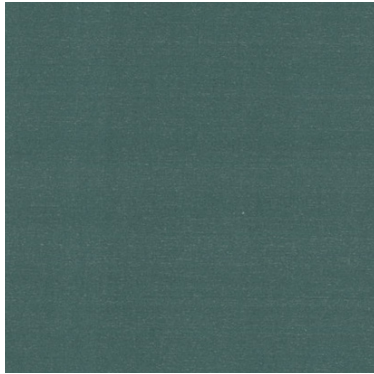
40 Stellar Blue



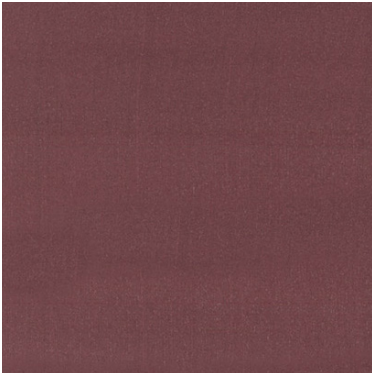
41 Moonlight



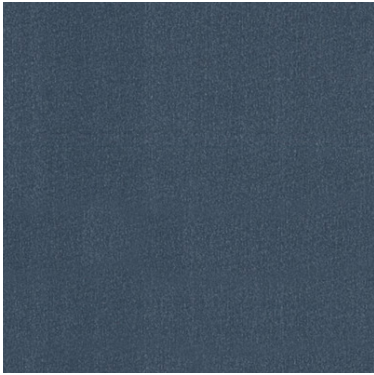
42 Baize Green



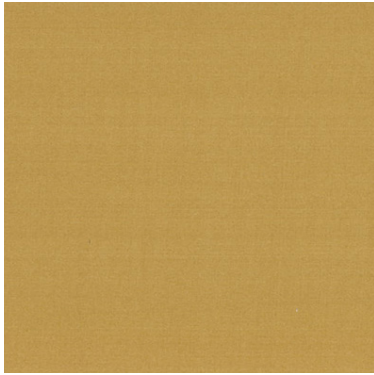
43 Delon Blue



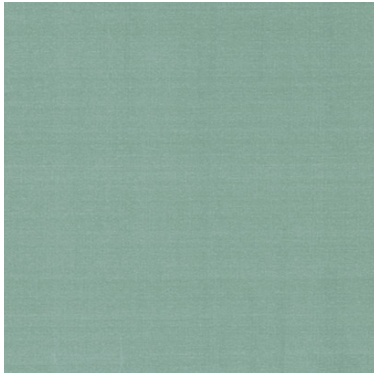
44 Beet



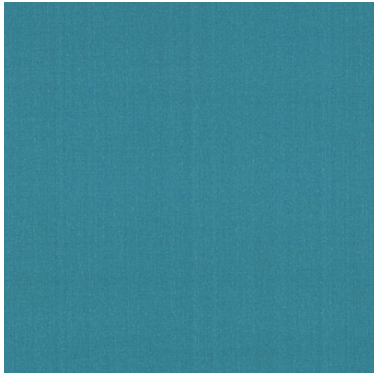
46 Bayou Blue



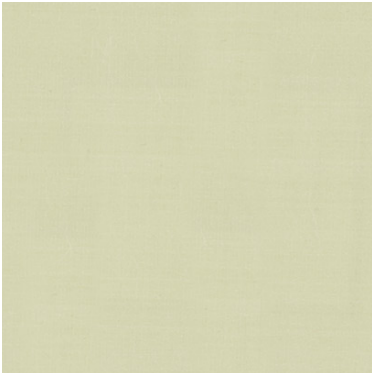
48 Bronze



51 Canton



54 Kingfisher



57 Celadon Green



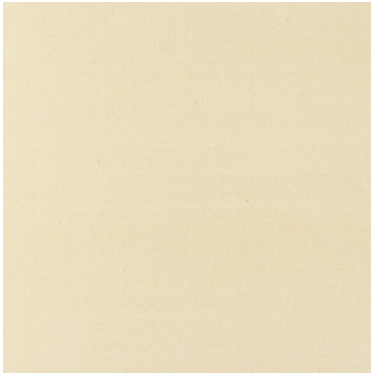
58 Forest Green



59 Rust



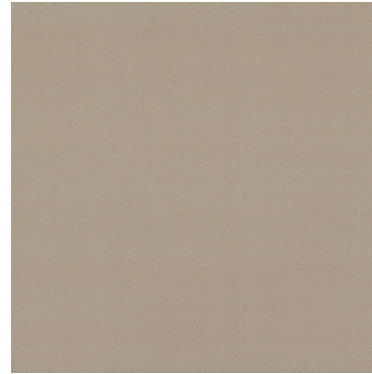
P003 Strata Silk



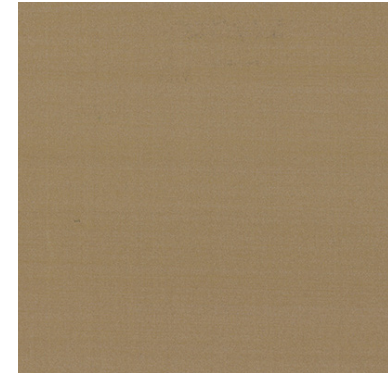
01 Opal



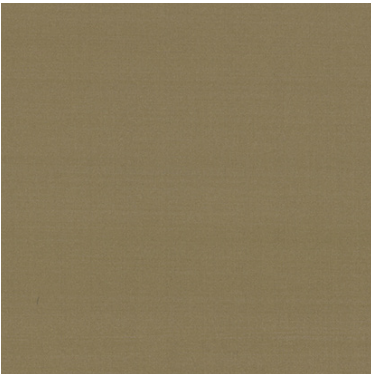
02 Barite



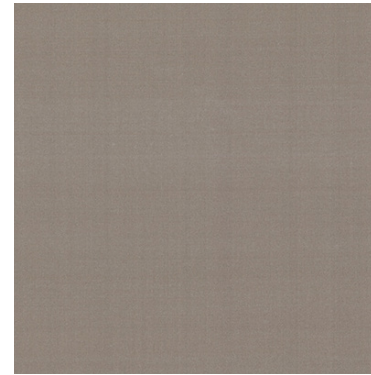
03 Mercury



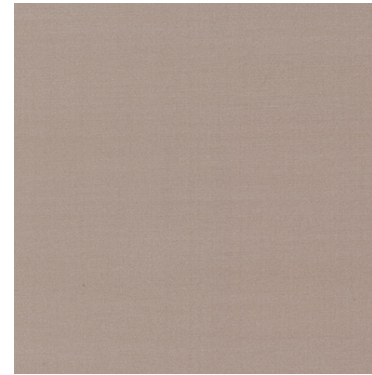
04 Silica



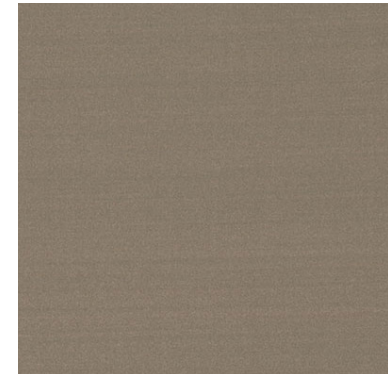
05 Vermic



06 Zinc



07 Selenium



08 Oxide



09 Galena



10 Manganese



11 Amethyst



14 Beryllium

P003 Strata Silk



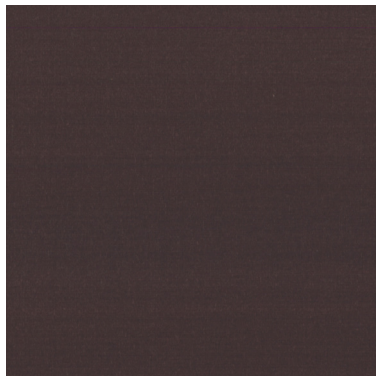
17 Pyrite



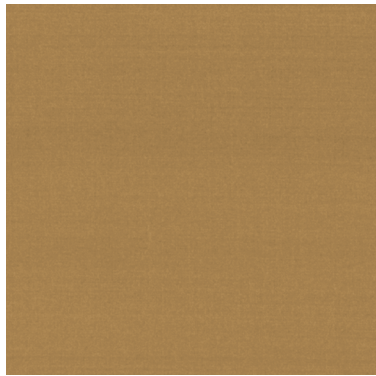
18 Vonsen



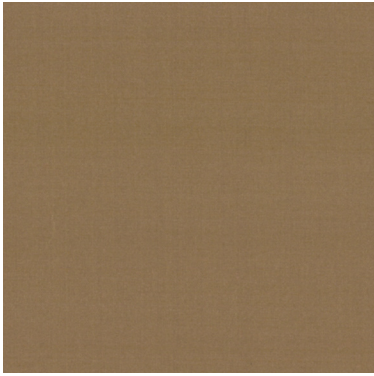
19 Azurite



20 Garnet



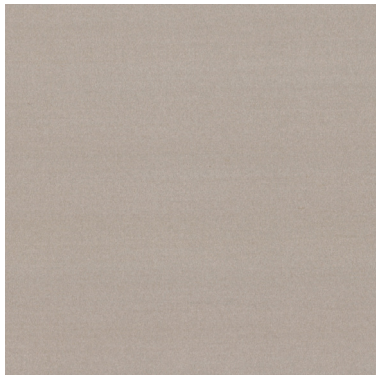
21 Rhuha



22 Okavango



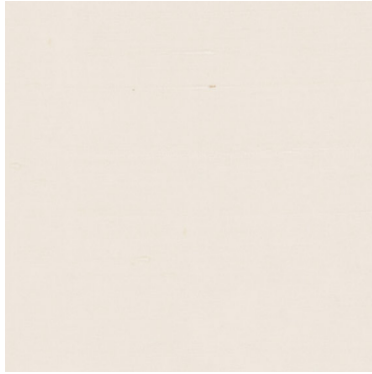
27 Strontium



28 Electrum



P004 Dupion Silk



01 Lepiota



02 Abalone



04 Lecida



05 Golden Moss



06 Truffle



07 Cort



08 Blewit



09 Enoki



10 Silver Lichen



11 Inky Cap



12 Oyster



**P009 Faille Silk**



**01** Antique White



**04** Blue Sky



**05** Breeze



**06** Pearl Grey



**07** Peit



**08** Woodbine



**09** Dusk



**10** Capri