

FROMENTAL

Bucolic
Conversational



A thoroughly English landscape painted in the style of a 19th Century panoramic block-print, Bucolic is both grand and understated.

FRONT COVER IMAGE Bucolic in Birch
Photo credit: Antiques supplied by Lorforde's Antiques
RIGHT-HAND IMAGE Bucolic in Saxe



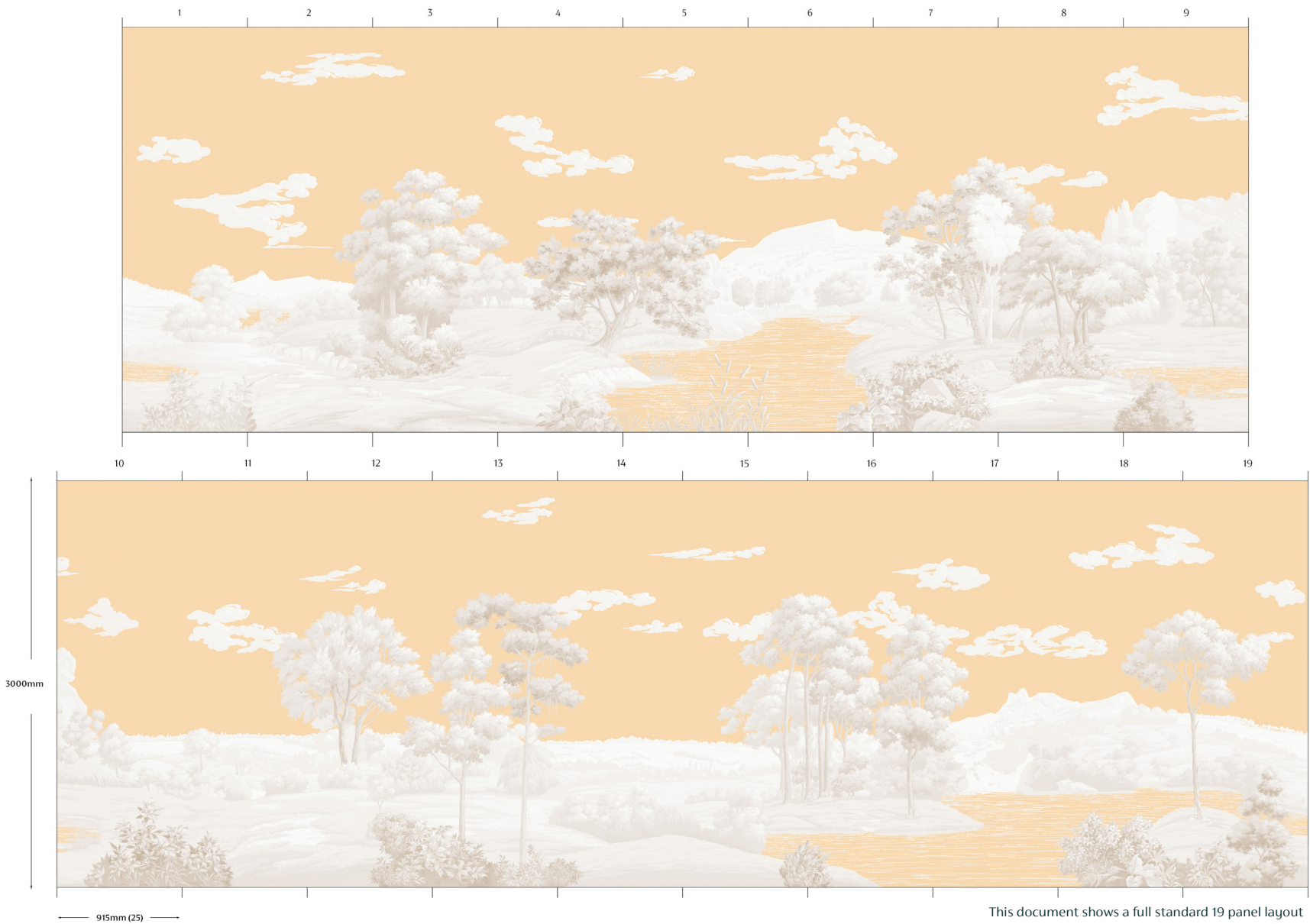


Shown here is a stunning example of how Bucolic can be rendered when fully hand-painted. Fully tailored to the space and further customised for the Goring Hotel, this version of Bucolic depicts British eccentricity at its best.

Playful additions to the otherwise classic landscape create intrigue. Polar bears, giraffes and palm trees all feature, with selected animals adorned with crowns; these unconventional twists elevate the scene from serene to mischievous, bringing a smile to those who visit.

IMAGES ABOVE Various custom elements of Bucolic in Saxe
 RIGHT HAND IMAGE HRH The Duchess of Cambridge adding the royal seal of approval
 Photo credit: Design by Russell Sage. Location, The Goring

Bucolic K012H/K012P



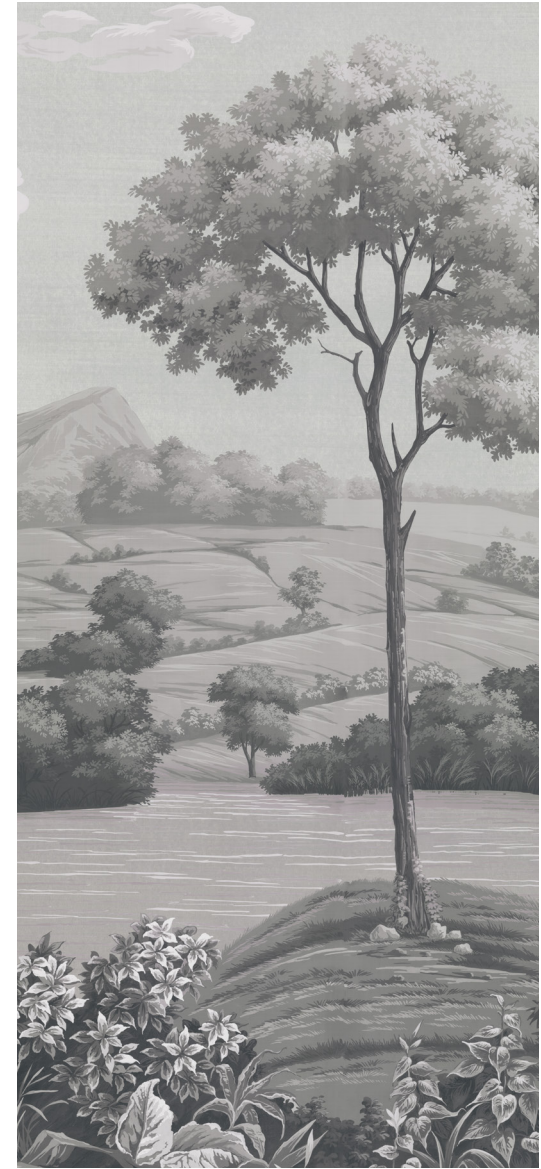
Colourways



02n **Birch** on Hand-Brushed Nacre



03a **Saxe** on Hand-Gilded Paper



04n **Pillar** on Hand-Brushed Nacre



How to Order

Fromental wallcoverings are hand-made to order, tailored for each room. From supplied elevations and floor plan, we will place the design and panel seaming to ensure optimal installation.

- **Straight-run**
Supplied as a series of joining panels. In order to calculate the number of panels required, simply specify the wall height and the perimeter of the walls to be covered.
- **Tailored**
We can also tailor this design to each room by placing the design layout and panel seaming to fit the space. To ensure optimal installation, we will also take care to avoid placing Safari animals and other major design elements on wall corners or at windows and doors. We will submit a miniature design layout for client approval prior production.

This service carries a tailoring fee between 10-30% depending on complexity.

- **Full Customisation**
Whilst our standard colourways of Bucolic are available back-printed, this design can also be fully hand-painted in our studios. This allows for the design to be fully tailored to your space. Additional elements can also be introduced to further personalise the layout. Please speak to a member of our team about customisation options.

Dimensions:

Width

Standard panel width 915mm/36" plus 25mm/1" trim.

Height

Standard panel height is 3m/118".

Taller panels are available when purchased with tailoring fee.

Extra plain background can be ordered to complete the space.

Standard delivery times vary from 4 to 12 weeks depending on the design.

LEFT HAND IMAGE Bucolic in Birch
Room by Katherine Pooley