



FROMENTAL

Kiku Garden
Lumiere

Kiku Garden is an elegant, graphic, and highly decorative wallcovering design inspired by the art of Japan and Europe's enduring fascination with it.



It shares much in common with our Kiku wallcovering; the boldly rendered chrysanthemums, the block colouring but forgoes the crisp, screen-printed borders of the original. Resulting in a hugely versatile design that works beautifully in all manner of spaces.



DESIGN: KIKU GARDEN

PRODUCT CODE: L003

PANEL HEIGHT: 3M

LAYOUT: 4 PANEL REPEAT

Bespoke Tailoring

For the most considered result, we recommend our Tailoring service. The design is adapted to your space—factoring in layout, key features, and complex areas such as staircases—to ensure a cohesive, intentional installation. Service fees apply.

Standard Run

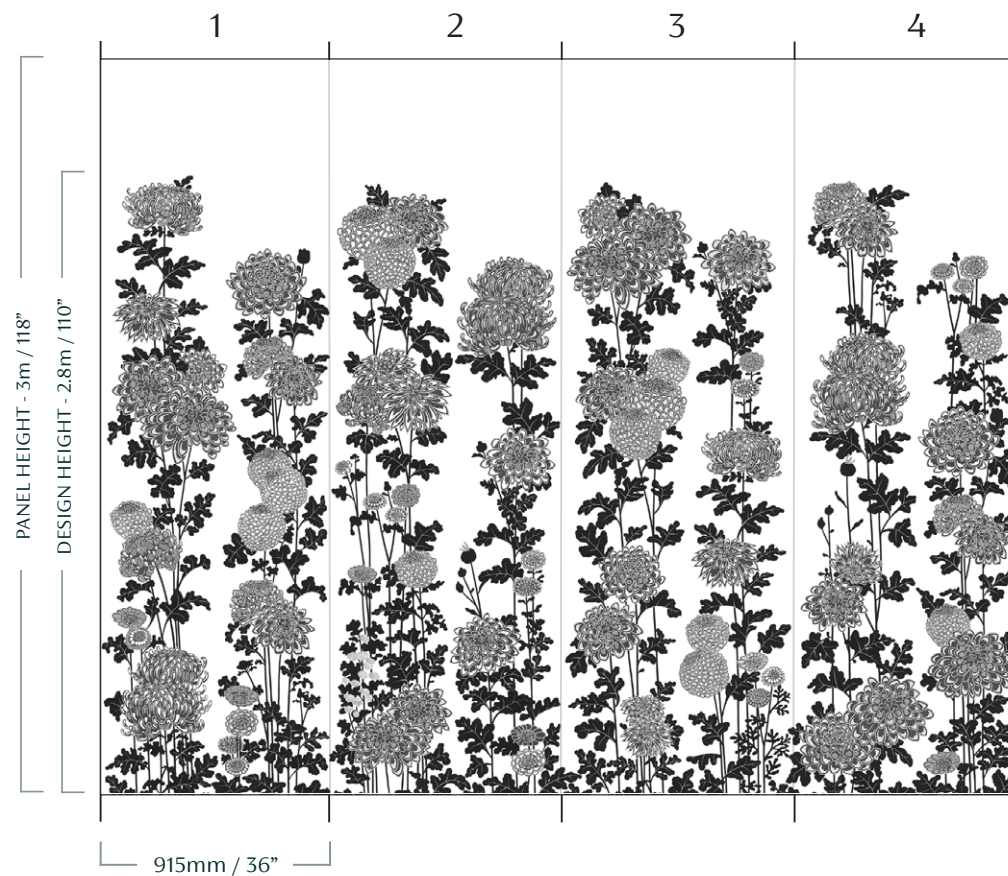
Available at set heights, the Standard Run is ideal if you need to move quickly into production. It offers the same artistry and craftsmanship as a tailored order but without spatial or compositional adjustments, resulting in a more general fit in challenging spaces.

Customisation

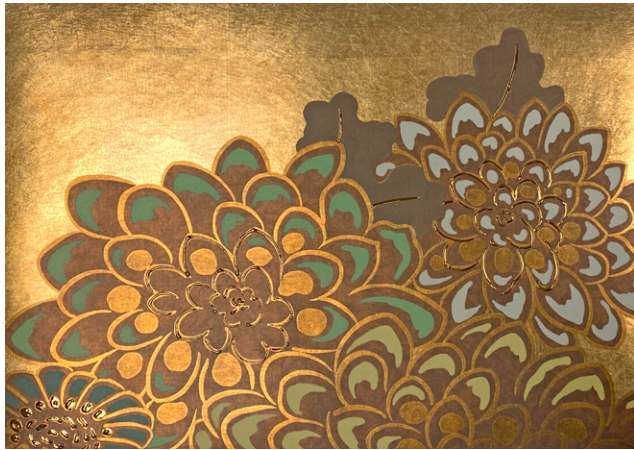
Many of our designs can be customised to suit your palette and preferences. As customisation involves design development, customised orders are completed through our Bespoke Tailoring service and cannot be offered as a Standard Run.

Embroidery

We do not recommend heavy embroidery for Standard Run orders, as embroidered sections may need to be trimmed during installation, which may lead to fraying.



Colourways



01 Hyogo

Rendered in warm bronze tones, features a traditional Japanese palette of emerald, jade, teal, off-white and leaves in deep olive green



02 Chiba

Warm yet fresh, our printed Chiba colourway features blossom detailing in oranges, yellows and pinks with crisply rendered matt white leaves



03 Hanami

A backdrop of silver-gilded paper, adorned with blossoms in dusky pink, light chestnut, and gunmetal grey tones. Enhanced with silver-foiled details, this wallcovering exudes opulence.

FROMENTAL

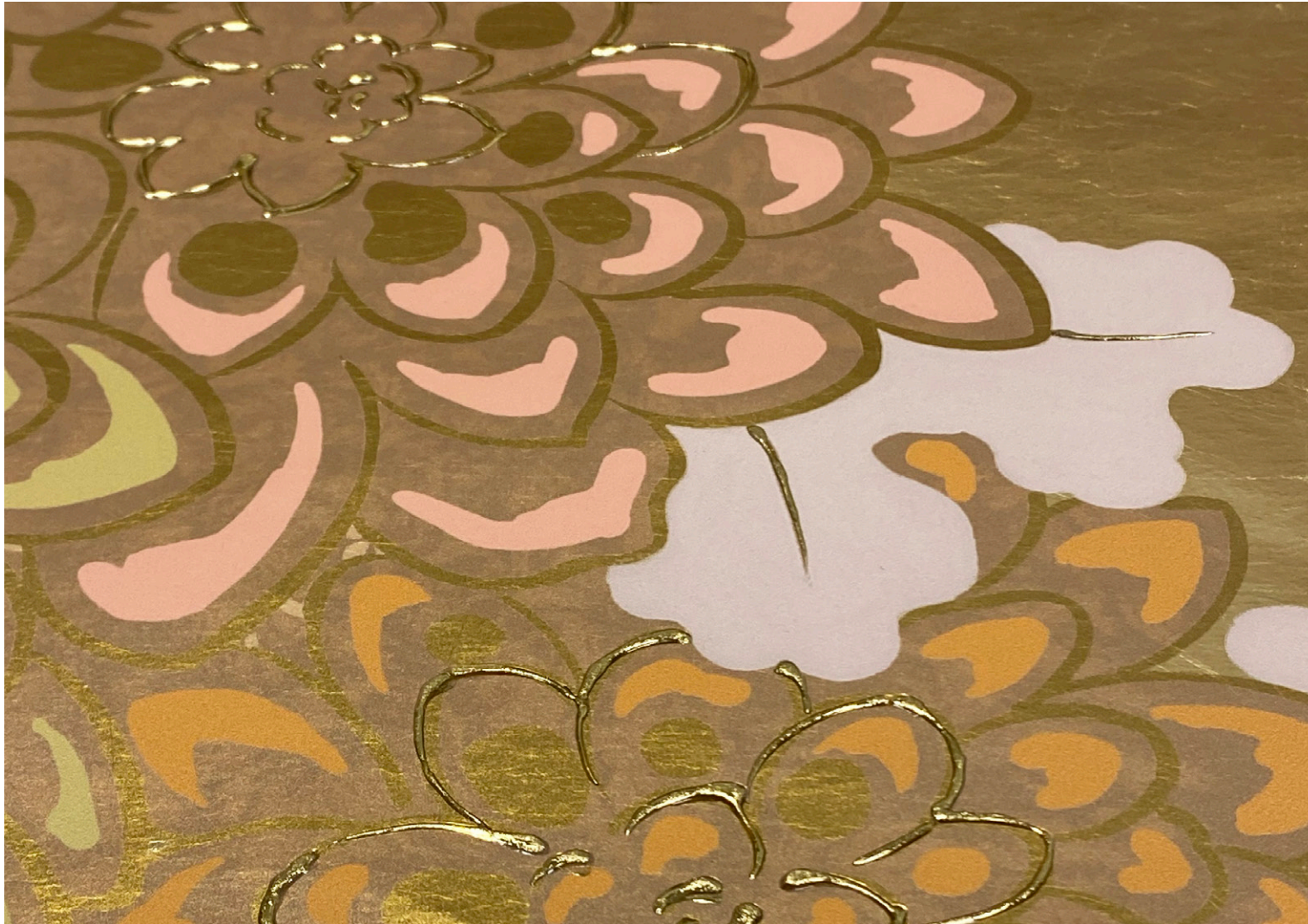


IMAGE Close up of Kiku Garden in Chiba